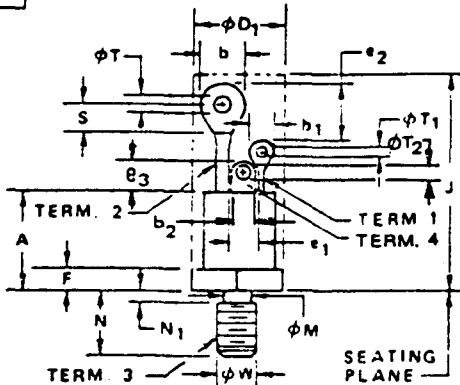
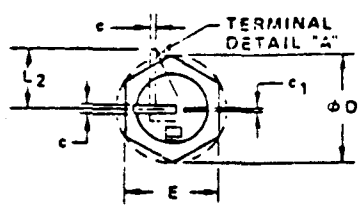
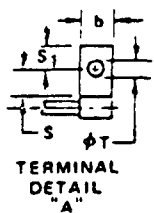


NOTES :



1. Refer to applicable symbol list.
2. Dimensioning and tolerancing per ANSI Y14.5-1966.
3. Device contour except on noted dimensions is optional within zone defined by ϕD_1 and J. ϕD_1 not to exceed actual E.
4. A chamfer (or undercut) on one or both ends of the hexagonal portion is optional.
5. Position of leads in relation to hexagon is not controlled.
6. Angular orientation of terminal(s) is optional.
7. Minimum flat.
8. Minimum spacing between Terminal 1 and 2 at all points.
9. Minimum difference in terminal lengths to establish datum line for numbering terminals.
10. Coated threads shall meet the requirements of ANSI B1.1-1960.
11. Terminal Detail "A" applies to this variation.
12. Elongated hole in terminal is optional.
13. Controlling dimensions: inch.
14. Millimeter dimensions are taken to the same number of places beyond the decimal point as the corresponding inch dimensions. Maximum conversion error is no more than .02 times the smallest unit value of corresponding inch dimensions.
15. Terminal 3 applies to this variation.

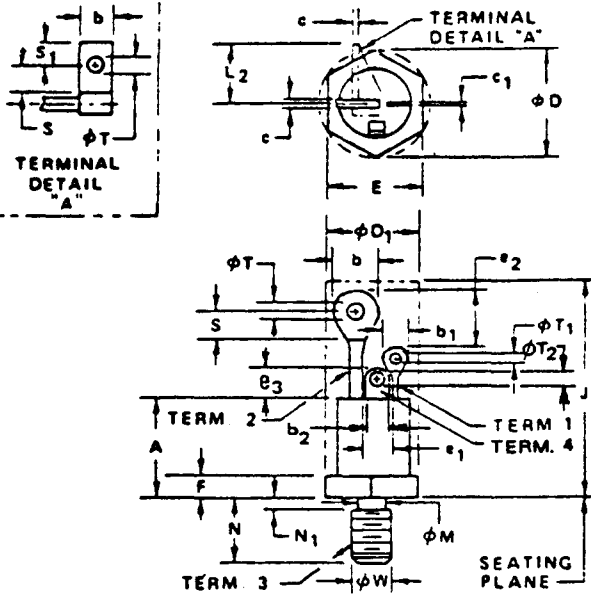
VARIATIONS (ALL DIMENSIONS SHOWN IN MILLIMETERS)

SYMBOL	AE		NOTE	AF		NOTE	AG		NOTE	AH		NOTE
	MIN.	MAX.		MIN.	MAX.		MIN.	MAX.		MIN.	MAX.	
	A	-		-	-		13.843	-		10.160	14.605	
b	5.588	9.525	5,6	-	-	5.334	7.620	5,6	9.15	11.93	5,6	
b ₁	3.175	4.749	5,6	-	-	-	3.556	5,6	5.34	7.62	5,6	
b ₂	-	-	-	-	-	4.445	5.842	-	-	-	-	
c	1.651	2.540	5,6	-	-	-	-	-	1.53	2.92	5,6	
c ₁	.635	1.905	5,6	-	-	-	-	-	.30	1.27	5,6	
phi D	-	21.996	-	-	16.510	-	16.510	-	-	31.16	-	
phi D ₁	-	18.491	3	-	13.817	3	13.817	3	-	26.18	3	
E	18.491	19.050	-	13.843	14.300	-	13.843	14.300	-	26.19	27.00	
e ₁	-	-	-	-	-	-	-	-	-	-	-	
e ₂	-	-	-	-	-	3.175	-	9	-	-	-	
e ₃	-	-	-	-	-	-	9.398	-	-	-	-	
F	1.905	5.207	4	1.905	5.334	4	1.905	5.080	4	4.32	12.70	4
J	30.480	39.624	3	-	24.130	3	-	32.080	3	-	45.97	3
L ₂	-	-	-	-	-	-	-	-	-	-	16.51	
phi M	7.138	7.899	-	5.665	6.324	-	5.665	6.324	-	11.74	12.64	
N	12.319	13.081	-	10.668	11.557	-	10.719	11.506	-	20.25	21.00	
N ₁	-	2.641	-	-	2.260	-	-	2.260	-	-	3.17	
S	3.556	-	7	-	-	-	3.048	-	7	4.58	-	7
S ₁	-	-	-	-	-	-	-	-	-	4.58	-	
phi T	3.556	3.937	-	1.651	2.286	12	3.175	4.191	-	4.58	6.60	
phi T ₁	1.270	1.778	-	.889	1.727	-	1.524	-	-	3.18	4.19	
phi T ₂	-	-	-	-	-	-	3.302	4.064	-	-	-	
phi W	-	5/16-24 UNF-2A	-	-	1/4-28 UNF-2A	-	-	1/4-28 UNF-2A	-	-	1/2 - 20 UNF - 2A	
NOTE	1,2,13,14			1,2,13,14			1,2,13,14,15					
REF.	TO-103											
ISSUE	A JUNE 19/4			A JUNE 1974			B APRIL 78			A MAY 1979		

JEDEC SOLID STATE PRODUCT OUTLINES	TITLE STUD HEX BASE FAMILY (SOLID TERMINALS)	ISSUE C	DATE 05/29/79	TO-208 AE-AG
--	--	------------	------------------	--------------

NOTES :

1. Refer to applicable symbol list.
2. Dimensioning and tolerancing per ANSI Y14.5-1966.
3. Device contour except on noted dimensions is optional within zone defined by ϕD_1 and J. ϕD_1 not to exceed actual E.
4. A chamfer (or undercut) on one or both ends of the hexagonal portion is optional.
5. Position of leads in relation to hexagon is not controlled.
6. Angular orientation of terminal(s) is optional.
7. Minimum flat.
8. Minimum spacing between Terminal 1 and 2 at all points.
9. Minimum difference in terminal lengths to establish datum line for numbering terminals.
10. Coated threads shall meet the requirements of ANSI B1.1-1960.
11. Terminal Detail "A" applies to this variation.
12. Elongated hole in terminal is optional.
13. Controlling dimensions: inch.
14. Terminal 3 applies to this variation.



VARIATIONS (ALL DIMENSIONS SHOWN IN INCHES)

SYMBOL	AE		NOTE	AF		NOTE	AG		NOTE	AH		NOTE
	MIN.	MAX.		MIN.	MAX.		MIN.	MAX.		MIN.	MAX.	
	A	-		-	-		.545	.400		.575	5,6	
b	.220	.375	5,6	-	.210	.300	5,6	-	-	5,6		
b1	.125	.187	5,6	-	-	.140	5,6	.210	.300	5,6		
b2	-	-	-	-	.175	.230	-	-	-	-		
c	.065	.100	5,6	-	-	-	-	.060	.115	5,6		
c1	.025	.075	5,6	-	-	-	-	.012	.050	5,6		
phi D	-	.866	-	.650	-	.650	-	-	1.227	-		
phi D1	-	.728	3	-	.544	.544	3	-	1.031	3		
E	.728	.750	-	.545	.545	.563	-	1.031	1.063	-		
e1	-	-	-	-	-	-	-	-	-	-		
e2	-	-	-	-	.125	-	9	-	-	-		
e3	-	-	-	-	-	.370	-	-	-	-		
F	.075	.205	4	.075	.075	.200	4	.170	.500	4		
J	1.200	1.560	3	-	.950	1.263	3	-	1.810	3		
L2	-	-	-	-	-	-	-	-	.650	-		
phi M	.281	.311	-	.223	.223	.249	-	.462	.498	-		
N	.485	.515	-	.420	.422	.453	-	.797	.827	-		
N1	-	.104	-	-	.089	.089	-	-	.125	-		
S	.140	-	7	-	-	.120	7	.180	-	7		
S1	-	-	-	-	-	-	-	.180	-	-		
phi T	.140	.155	-	.065	.125	.165	12	.180	.260	-		
phi T1	.050	.070	-	.035	.060	-	-	.125	.165	-		
phi T2	-	-	-	-	.130	.160	-	-	-	-		
phi W	5/16-24 UNF-2A		-	1/4-28 UNF-2A		1/4-28 UNF-2A		1/2 - 20 UNF - 2A		-		

NOTE	1,2,13	1,2,13	1,2,13,14
REF.	TO-103		
ISSUE	A JUNE 1974	A JUNE 1974	B APRIL 1978 A MAY 1979

JEDEC SOLID STATE PRODUCT OUTLINES	TITLE STUD HEX BASE FAMILY (Solid Terminals)	ISSUE C	DATE 05/29/79	TO-208AE-AG
--	--	------------	------------------	-------------